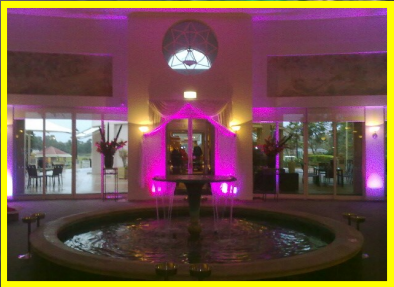


DECORATIVE
LIGHTING
COMPANY

www.decolight.com.au

CONNECT MULTIPLE UNITS USING ONE POWER SOURCE



EXTREMELY DURABLE MODERN LED TECHNOLOGY



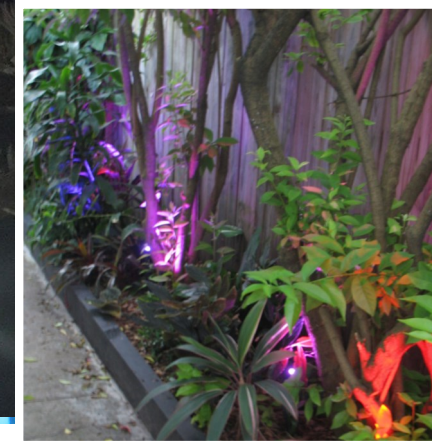
SAFE, ENERGY EFFICIENT, VERSATILE

HIGH QUALITY FLOOD LIGHTS

HIGH QUALITY FLOOD LIGHTS

LOOK AT ALL THESE FEATURES... !

- Commercial grade products
- Colour changeable
- End-to-end connectable flood lights
- Heavy duty, built for rough handling
- Functions: Dimmable, fades, strobes
- Varying sizes for different uses
- Safe 24 volt power supply
- Outdoor & Indoor friendly



Flood LIGHTS OVERVIEW

24V Flood light Units

Cable: 2 or 4 pin PVC and UV stabilised cable 1.5mm (various lengths)

Sizes: 10 watt, 15 watt, 18 watt, 30 watt, 54 watt, 86 watt (larger units available)

Protection: Rated at IP65 for permanent outdoor applications - Submersible available

Safety: Low voltage DC FOR SAFETY

Longevity: Long life diodes, permanent outdoor quality with warranty included

Flood Light Sizing



54WATT Flood Light: 225x 185x125
Two 500mm tails (1 male, 1 female)
Power: 24 Volts **Weight:** 1.8KG
Outdoor quality: IP65



86WATT Flood Light: 226x 187x160
Two 500mm tails (1 male, 1 female)
Power: 24 Volts **Weight:** 2.9KG
Outdoor quality: IP65

Features

For outstanding output increase the size of your wash lights.

24 volt output **Bold** Illumination with adjustable brightness

3-in-one **RED**, **GREEN**, **BLUE** diodes or Solid colour with memory function.

Colour changing and functions available via remote. Strokes, fades, dimmable

Grey or black enclosure. Male / female end-to-end connectors.

Accessories Available



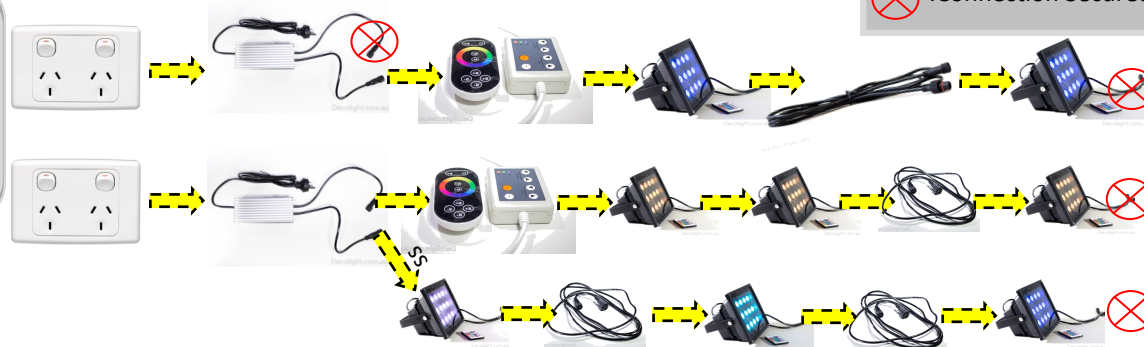
A - Extension Leads; Various sizing and custom available

B -Colour controllers; radio frequency, infrared, WIFI

C - Power supplies, sizes to match the application

Connectable - Designed for the event industry

Our lighting systems all share the same connectable principle. Using one power outlet, our wash lights big or small can be 'daisy-chained' along to create dynamic lighting arrangements.



DID YOU KNOW? You can connect our fairy Light & festoon lighting systems to the same power supply!!

If required use extensions to take power from the power supply to the first flood light unit.

Place extensions between each flood light to spread the wash of light across the desired area.

Perfect for creative garden displays, marquees, highlighting features, bridal backdrops, stage productions and more

LIGHTING PACKAGES AVAILABLE

